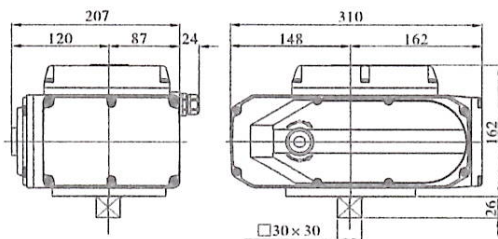


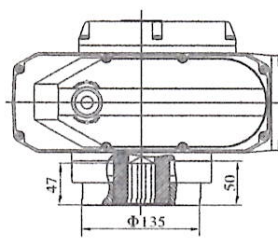


OVERALL DIMENSIONS AND PERFORMANCE PARAMETERS of SMART-100/160/200

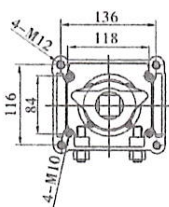
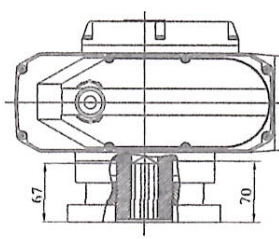
Standard type



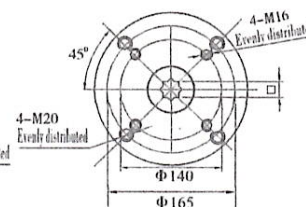
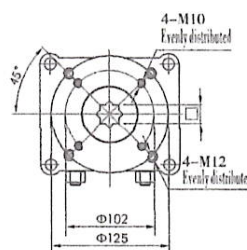
Direct installation type (SMART-100 160)



Direct installation type (SMART-200)



Parameters for direct installation type		
	SMART-100/160	SMART-200
Square	□ 22x22 or □ 27x27	□ 27x27 or □ 36x36
Flange	F10 F12	F14 or F16
Valve shaft	Height: ≤46mm	Height: ≤66mm



Parameters	Type	SMART-100			SMART-160			SMART-200		
	Power	AC110V	AC220V	AC380V	AC110V	AC220V	AC380V	AC110V	AC220V	AC380V
Performance	Motor Power	120W	120W	90W	140W	140W	100W	140W	140W	100W
	Rated Current	1.93A	0.94A	0.44A	1.75A	0.96A	0.46A	1.75A	0.98A	0.48A
	Standard Time/Torque	30S/1000Nm			48S/1600Nm			60S/2000Nm		
	Optional Time/Torque	15S/500Nm								
	Turning Angle	0~90° Adjustable			0~90° Adjustable			0~90° Adjustable		
	Available Control Circuit	Types of A/B/C/D/E/F/H			Types of A/B/C/D/E/F/H			Types of A/B/C/D/E/F/H		
	Total Weight	17kg			17.5kg			18kg		
	Insulation Resistance	AC110V/220V/380V: 100 MΩ/500VDC								
	Voltage-withstand Class	AC110V/220V: 1500VAC 1 Minute, AC380V: 1800VAC, 1 Minute								
	Protection Class	IP67								
	Installation Angle	360°, at any angle								
	Electric Interface	G1/2 Water-proof Cable Connector								
	Ambient Temperature	-30°C~+60°C								
	Optional Function	●Over-torque Protection ●Heater for eliminating moisture								