

Manual Call Points Indoor
4099-9022 (BREAK GLASS)



UL, ULC, CSFM Listed; FM Approved;
MEA (NYC) Acceptance*

Multi-Application Peripherals

IDNet™ or MAPNET II® Communicating Devices
Addressable Manual Stations

Features

Individually addressable manual fire alarm stations with:

- Power and data supplied via IDNet or MAPNET II addressable communications using a single wire pair**
- Operation that complies with ADA requirements
- Pull lever that protrudes when alarmed
- Break-rod supplied (use is optional)
- Models are available with single or double action (breakglass or push) operation
- UL listed to Standard 38

Compatible with the following Simplex® control panels:

- Model Series 4008, 4010, 4100U, 4020, 4100, and 4120 fire alarm control panels equipped with either IDNet or MAPNET II communications
- Model Series 2120 Communicating Device Transponders (CDTs) equipped with MAPNET II communications

Compact construction:

- Electronics module enclosure minimizes dust infiltration
- Allows mounting in standard electrical boxes
- Screw terminals for wiring connections

Tamper resistant reset key lock (keyed same as Simplex fire alarm cabinets)

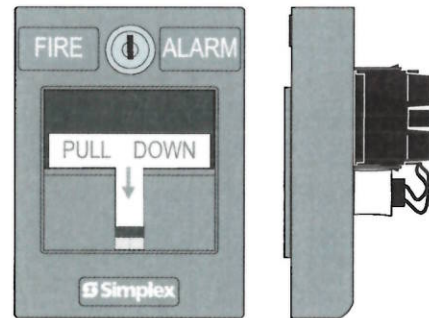
Multiple mounting options:

- Surface or semi-flush with standard boxes or matching Simplex boxes
- Flush mount adapter kit
- Adapters are available for retrofitting to commonly available existing boxes

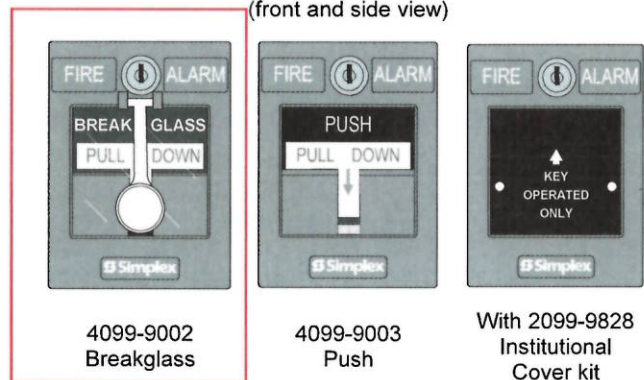
Description

The Simplex model 4099-9001 addressable station combines the familiar Simplex manual station housing with a compact communication module that is easily installed to satisfy demanding applications. Its integral individual addressable module (IAM) constantly monitors status and communicates changes to the connected control panel via IDNet or MAPNET II communications wiring.

* Refer to page 2 for specific model listings. This product has been approved by the California State Fire Marshal (CSFM) pursuant to Section 13144.1 of the California Health and Safety Code. See CSFM Listing 7150-0026:224 for allowable values and/or conditions concerning material presented in this document. It is subject to re-examination, revision, and possible cancellation. Accepted for use – City of New York Department of Buildings – MEA35-93E. Additional listings may be applicable; contact your local Simplex product supplier for the latest status. Listings and approvals under Simplex Time Recorder Co. are the property of Tyco Safety Products Westminster.



4099-9001 Addressable Manual Station
(front and side view)



Operation

Activation of the Simplex 4099-9001 single manual station requires a firm downward pull to activate the alarm switch. Completing the action breaks an internal plastic break-rod (visible below the pull lever, use is optional). The use of a break-rod can be a deterrent to vandalism without interfering with the minimum pull requirements needed for easy activation. The pull lever latches into the alarm position and remains extended out of the housing to provide a visible indication.

Double Action Stations (Breakglass) require the operator to strike the front mounted hammer to break the glass and expose the recessed pull lever. The pull lever then operates as a single action station.

Double Action Stations (Push Type) require that a spring loaded interference plate (marked PUSH) be pushed back to access the pull lever of the single action station.

Station reset requires the use of a key to reset the manual station lever and deactivate the alarm switch. (If the break-rod is used, it must be replaced.)

Station testing is performed by physical activation of the pull lever. Electrical testing can be also performed by unlocking the station housing to activate the alarm switch.

** IDNet and MAPNET II addressable communications designs are protected by U.S. Patent No. 4,796,025; 5,966,002; and 6,034,601.

BG2 Range - MANUAL CALL POINT



Exed, Intrinsically Safe (Exia), Weatherproof

Manual Call Point Ex d (Indoor)
Model: BG2EDC2FRZ



Features

- Zone 0, Zone 1 and Zone 2 use.
- Exed, Exia or weatherproof.
- ATEX approved – Ex II 1GD (Exia).
– Ex II 2G (Exed).
- BASEEFA certified.
- IP66 and IP67.
- Certified temperature: –40°C to +70°C*.
- Corrosion resistant red painted GRP.
- Retained stainless steel cover screws.
- Optional lift flap.
- Key operated test facility.
- Lightweight and robust.
- Breakglass hammer available.
(Contact sales office for details).

*Depending on version.

Introduction

This manual fire alarm call point has been designed for use in flammable atmospheres and harsh environmental conditions. The GRP enclosure is suitable for use offshore or onshore where lightweight combined with a high level of corrosion resistance is required.



Cooper MEDC Limited,
Unit B, Sutton Parkway,
Oddicroft Lane, Sutton in Ashfield
NG17 5FB, UK.

Cooper MEDC (USA)
3413 North Sam Houston Parkway West
Suite 212
Houston, TX 77086, USA

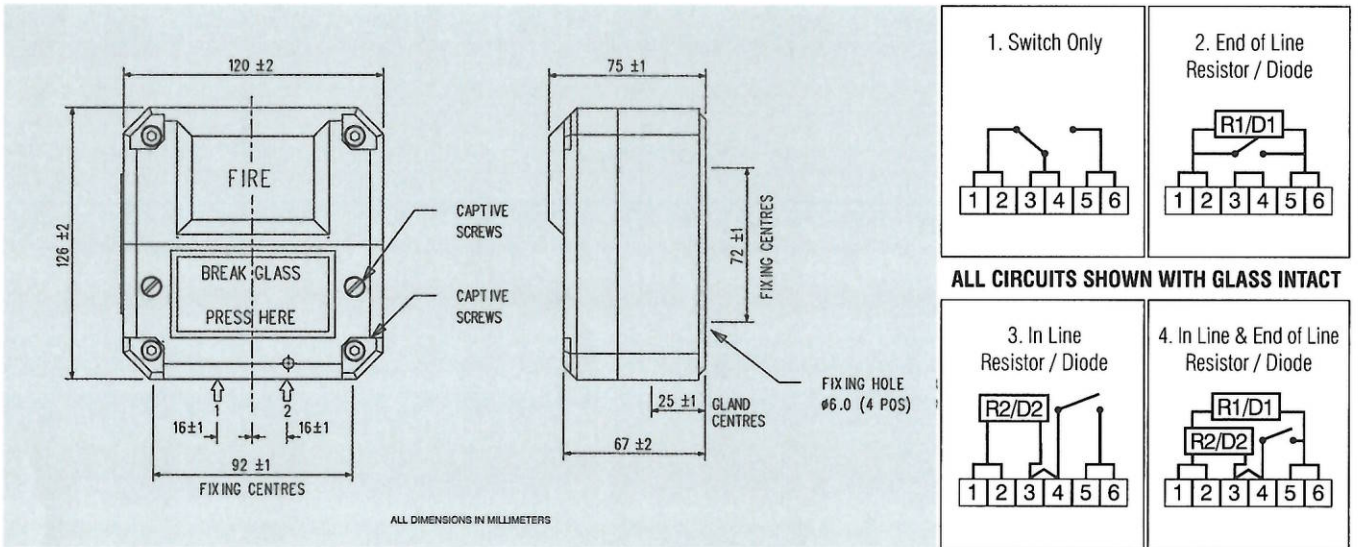


Sales Enq. UK: +44 (0)1623 444 445 Sales Enq. USA: +1 (713) 937- 9772 E-Mail: medc.sales@cooperindustries.com Web: www.coopermedc.com

6DS029/N

Specification

	BG2W	BG2E	BG2I
Protection:	Dust-tight and Weatherproof	Explosion Protected Exed (Increased Safety)	Explosion Protected Exia (Intrinsically Safe)
Certification:	Not Applicable	CENELEC EN50014, 018, 019, 028 Cert. No. BAS02ATEX2105X ExedIICT6 (switch only) Exd(e) mb IIC T4 GB ExedmIICT4 (other versions) Suitable for use in Zones 1 & 2	CENELEC EN50014, 020 Cert. No. Baseefa03ATEX0084X Exia IIC T4 Suitable for use in Zones 0, 1 & 2
Voltage:	Up to 254V	Up to 250V (Switch only) Up to 24V (Resistors & Switch)	Up to 28V (IS)
Certified Temperature:	-40°C to +55°C	-20°C to +50°C	-40°C to +70°C
Ingress Protection:	IP66 & 67	IP66 & 67	IP66 & 67
Switch Ratings:	d.c.: 0-30V 5A (resistive) or 3A (inductive) 30V-50V 1A resistive or inductive a.c.: 0-254V 5A resistive or inductive		NOT APPLICABLE
Resistor Values:	100R Minimum*	100R Minimum, 39k Maximum*	470R Minimum*
Cable Entries:	2 x M20 bottom.		
Terminals:	6 x 2.5mm ²	6 x 2.5mm ²	6 x 2.5mm ²
Weight:	1.2 Kg.		
Material:	U.V. resistant glass reinforced polyester		
Finish:	Painted Red		



Ordering Requirements

The following code is designed to help in selection of the correct unit. Build up the reference number by inserting the code for each component into the appropriate box. **For standard products, available ex-stock, contact sales office for details.**

Model	Options	Flap	Finish																																
<div style="border: 1px solid black; width: 40px; height: 20px; margin: 0 auto;"></div>	<div style="border: 1px solid black; width: 40px; height: 20px; margin: 0 auto;"></div>	<div style="border: 1px solid black; width: 40px; height: 20px; margin: 0 auto;"></div>	<div style="border: 1px solid black; width: 40px; height: 20px; margin: 0 auto;"></div>																																
<p>The MEDC BG Range of Manual Alarm Call Points caters for numerous options such as variety of colours, LED indication, earth continuity, double switch, etc. See separate catalogue sheet for details.</p> <table border="1"> <thead> <tr> <th>Model</th> <th>Code</th> </tr> </thead> <tbody> <tr> <td>BG2W – a.c. or d.c.</td> <td>BG2WNN</td> </tr> <tr> <td>BG2I – Up to 28V (I.S.)</td> <td>BG2INN</td> </tr> <tr> <td>BG2E – d.c.</td> <td>BG2EDC</td> </tr> <tr> <td>BG2E – a.c.</td> <td>BG2EAC</td> </tr> </tbody> </table>	Model	Code	BG2W – a.c. or d.c.	BG2WNN	BG2I – Up to 28V (I.S.)	BG2INN	BG2E – d.c.	BG2EDC	BG2E – a.c.	BG2EAC	<table border="1"> <thead> <tr> <th>Options</th> <th>Code</th> </tr> </thead> <tbody> <tr> <td>Switch only</td> <td>1</td> </tr> <tr> <td>End of line resistor</td> <td>2*</td> </tr> <tr> <td>In line resistor</td> <td>3*</td> </tr> <tr> <td>In line and end of line resistor</td> <td>4*</td> </tr> <tr> <td>Diode (specify location & value)</td> <td>5</td> </tr> </tbody> </table>	Options	Code	Switch only	1	End of line resistor	2*	In line resistor	3*	In line and end of line resistor	4*	Diode (specify location & value)	5	<table border="1"> <thead> <tr> <th>Flap</th> <th>Code</th> </tr> </thead> <tbody> <tr> <td>Fitted</td> <td>F*</td> </tr> <tr> <td>Not Fitted</td> <td>N</td> </tr> </tbody> </table> <p>* Polycarbonate lift flap.</p>	Flap	Code	Fitted	F*	Not Fitted	N	<table border="1"> <thead> <tr> <th>Finish</th> <th>Code</th> </tr> </thead> <tbody> <tr> <td>Red Painted</td> <td>R</td> </tr> </tbody> </table>	Finish	Code	Red Painted	R
Model	Code																																		
BG2W – a.c. or d.c.	BG2WNN																																		
BG2I – Up to 28V (I.S.)	BG2INN																																		
BG2E – d.c.	BG2EDC																																		
BG2E – a.c.	BG2EAC																																		
Options	Code																																		
Switch only	1																																		
End of line resistor	2*																																		
In line resistor	3*																																		
In line and end of line resistor	4*																																		
Diode (specify location & value)	5																																		
Flap	Code																																		
Fitted	F*																																		
Not Fitted	N																																		
Finish	Code																																		
Red Painted	R																																		

* Specify resistor values.

All the above specifications, dimensions, weights and tolerances are nominal (typical) and Cooper MEDC reserve the right to vary all data without prior notice. No liability is accepted for any consequence of use.

