



Printed Circuit filter, small and economic, it protects the circuit against noises and eliminates spurious emissions.

Filtro da circuito stampato, compatto ed economico, protegge l'apparecchiatura dai disturbi provenienti dalla rete e limita le emissioni spurie.

Technical Specifications:

Manufacture

Plastic case sealed with self-extinguishing resin Vo

Connections

For PCB mounting

Electrical specifications:

Rated voltage (Vr)	max 250 Vac at 50/60 Hz
Rated current (Ir)*	referred to room temp.= 40°C
Leakage current (IL)	≤ 0,25 mA
Voltage test (2s.)	line to ground 3000Vdc or 1800 Vac line to line 1700 Vdc
Climatic category	HPF (25/085/21) -25°C to +85°C

Caratteristiche tecniche:

Costruzione

Custodia plastica sigillata in resina autoestinguente Vo

Terminali

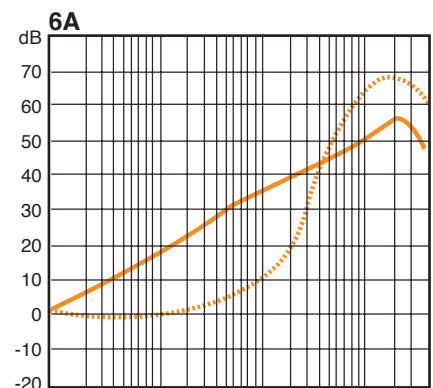
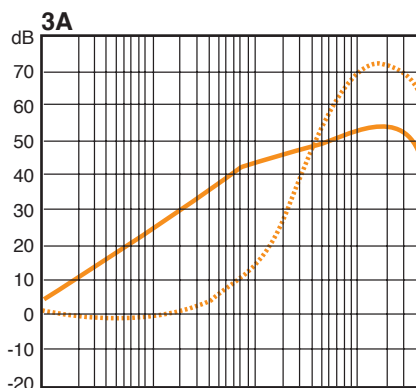
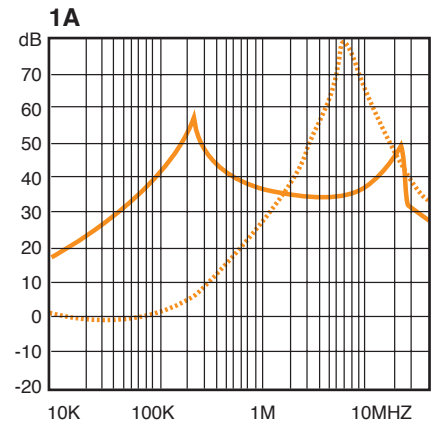
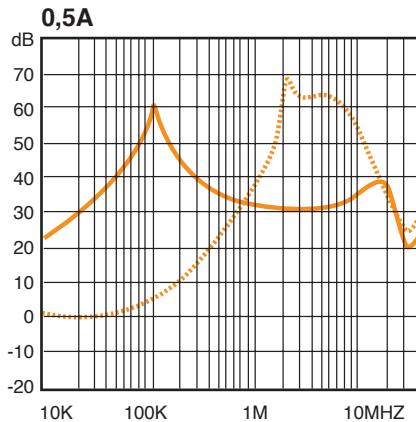
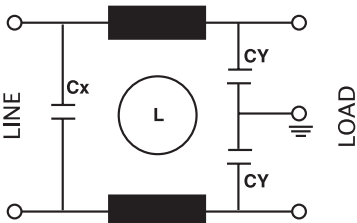
per montaggio da circuito stampato

Caratteristiche elettriche:

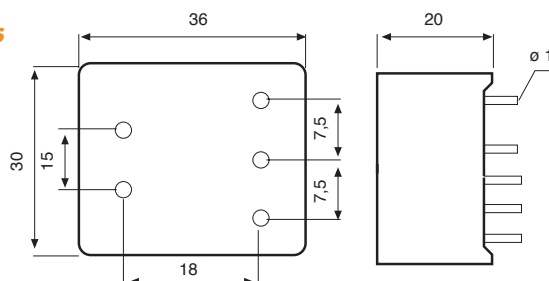
Tensione nominale (Vr)	max 250 Vac at 50/60 Hz
Corrente nominale (Ir)*	riferita ad una temp.di 40°C
Corrente di fuga (IL)	≤ 0,25 mA
Tensione di prova (2s.)	linea e massa 3000Vdc o 1800 Vac linea e linea 1700 Vdc
Categoria climatica	HPF (25/085/21) -25°C to +85°C

Code	IR(A)*	Cx(μF)	Cy(pF)	L(mH)
ARO3.0.5 A	0.5	0.1	2500	40
ARO3.1A	1	0.1	2500	10
ARO3.3A	3	0.1	2500	2
Ar03.6A	6	0.1	2500	1

Circuit diagram



Dimensions



— Asymmetrical
 Symmetrical

APPROVALS

