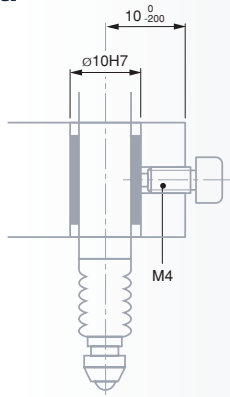


Clamping Elements for Axial Probes

Provided with 3 clamping faces – Prevent the metrology properties of the guiding system from being altered due to possible distortion.

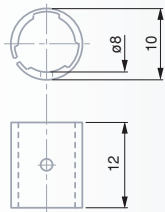
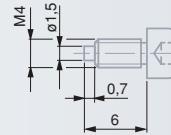


VKD clamp screw



02611013

M4



VKE clamp



02611014

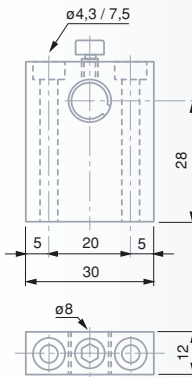
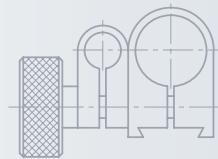
mm
8

Clamp collar



01860401

Fastening points
mm
5,6 or 9,5 in diameter with dovetail



VDE clamps with fastening sleeve and screw included



02660048

mm
8

Manually Operated Devices for Retracting the Measuring Bolt



03540104 Mechanical retraction device

Consisting of:

- 03540101 1 Lift lever
- 03540102 1 Washer



03260401 Pneumatic retraction device
Suited for probes GT 22, 271, 28, 42, 44, 611, 62 – GTL 211, 22

Consisting of:

- 03540405 1 Hand-operated vacuum pump
- 1 Air tube, 4,7 mm in diameter, 1 m long



All dimensions shown in the drawing must be respected



Shipping packaging



Shipping packaging

