



# NAMUR Mounted, Type C45, 'P' Series Solenoid Valve

## Description

Solenoid valve designed for direct mounting onto 1/4 turn pneumatically operated valve actuators meeting 'NAMUR' standard fixing dimensions.

## Features

- Interchangeable CNOMO interface coil units including various hazardous area options.
- Side face air connection.
- 1/2" BSP mains air connection and 1/2" BSP exhaust ports.
- Integrated exhaust to spring (ETS) feature in 3/2 position.
- Single operator spring return function or double operator stay put function.
- Pilot exhaust dust caps fitted as standard.
- Valve body materials: aluminium (std.), 316 stainless steel, brass

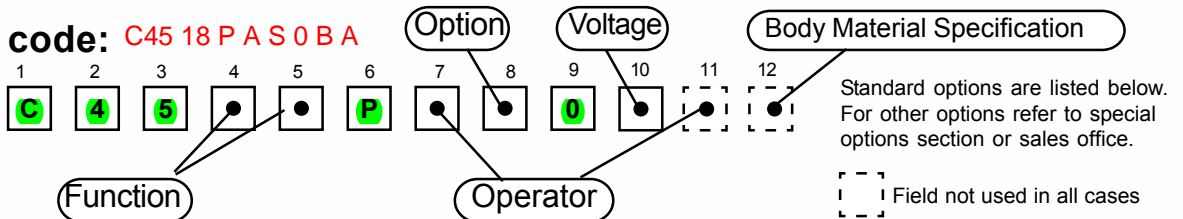
## Conversion facility

- Built in 3/2 (ETS) to 5/2 function conversion facility for spring return and double acting actuators respectively. (see reverse)



Valve is illustrated with Terminal Box EExd approved operator

**Product code:** C45 18 P A S 0 B A



## Options:

### Function

Code:

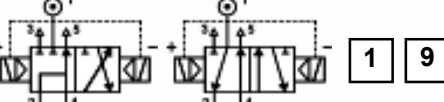
3/2      5/2      Field: 4    5

Spring return,  
internal pilot air feed



Code: **1** **8**

Double solenoid,  
internal pilot air feed



Code: **1** **9**

Note. Contact Pneumatrol for details of external pilot variants.

## Options:

### Option

Code:

Field: 8

Screwdriver override (standard)

Code: **S**

Lever manual override

Code: **C**

Push button manual override

Code: **D**

No option required

Code: **0**

### Voltage

Voltage:

Code:

Field: 10

12v DC

Code: **A**

Voltage:

Code:

Field: 10

24v AC (50/60 Hz)

Code: **R**

12v DC low power

Code: **G**

48v AC (50/60 Hz)

Code: **S**

24v DC

Code: **B**

110v AC (50/60 Hz)

Code: **T**

24v DC low power

Code: **H**

240v AC (50/60 Hz)

Code: **U**

48v DC

Code: **C**

No voltage  
(no operator)

Code: **0**

### Operator

Operator:

Code:

Field: 7    11

Operator:

Code:

Field: 7    11

EExia (ATEX)

Code: **A** **A**

EExm (ATEX)

Code: **9** **A**

Terminal Box

Code: **B**

EExme (ATEX)

Code: **9** **E**

MC30 plug & socket

Code: **K**

EExnA (ATEX)

Code: **N** **A**

Plug & Socket

Code: **P**

EExia (CSA)

Code: **V**

Piezo EExia (ATEX)

Code: **H** **P**

EExia (SAA)

Code: **W**

EExd (ATEX)

Code: **D** **A**

EExia (FM)

Code: **U**

No operator

Code: **0**

Note. Where no character is indicated for field 11 then this field is not required. In this case the product code consists of only 10 characters.

### Body Material Specification

Material:

Code:

Aluminium

Code: **field left blank**

Stainless Steel

Code: **S**

Brass

Code: **B**

Note. Field 12 is only used in conjunction with field 11. When field 11 is not used contact Pneumatrol for coding