

**RES20F10**

**Rev. 0**

**CHARACTERISTICS:**

Rated Voltage:	250VAC max
Rated Current at Ambient:	10A @ 40°C
Operating Frequency:	DC-400HZ
Climatic Class (IEC60068-1):	25/100/21
Temperature Range:	-25°C to +100°C
Over load Current:	1.5 x Rated Ct. for 1 Min
Operational Leakage current : ( at 230VAC/50Hz and Total C +/-20%)	0.74 mA max
Worst case Leakage current : ( N interrupted and Total C +/-20%)	<1.11 mA max
DCR @ 25°C (+/-25%) :	45 mΩ
Test Voltage (100%) for 2 sec:-	L-N: 1100VDC
	L-GND: 3000VDC
Ingress Protection:	IP 20
Weight (Approximate):	85 gr

**FILTER PARAMETERS:**

Total Inductance (L-L'+N-N') @10KHz:	0.8mH +50%,-30%
Total Capacitance (L-L/L-N) @1KHz:	0.3μF +/- -20%
Total Capacitance (L/N-GND) @1KHz:	9.4nF +/- -20%
Total Resistance (L-L/L-N):	1MΩ +/- -10%
Total Resistance (L/N-GND):	

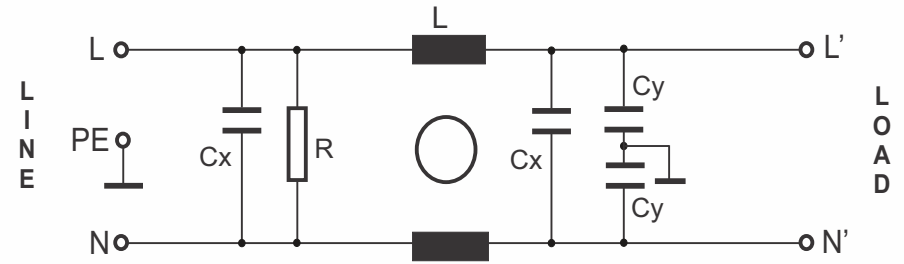
**APPROVALS:**

REACH  
RoHS  
UL

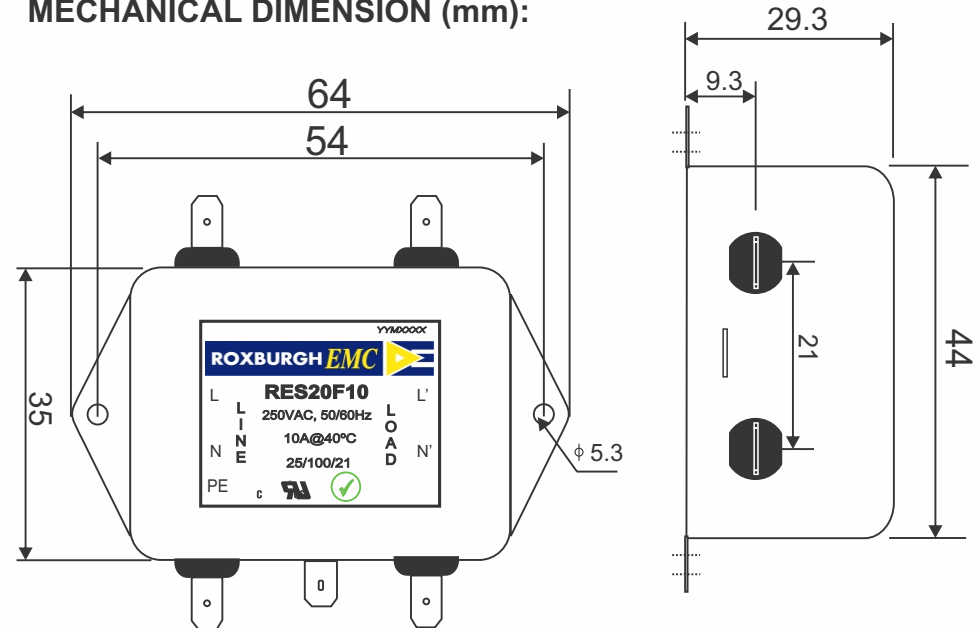


APPROVED BY  
AJAY  
Date: 4-04-2014

**CIRCUIT DIAGRAM:**



**MECHANICAL DIMENSION (mm):**



**Note:**

Housing matl. Fe with Ni Plated  
Fast-On Terminal ( 6.3 x 0.8mm)  
Connections

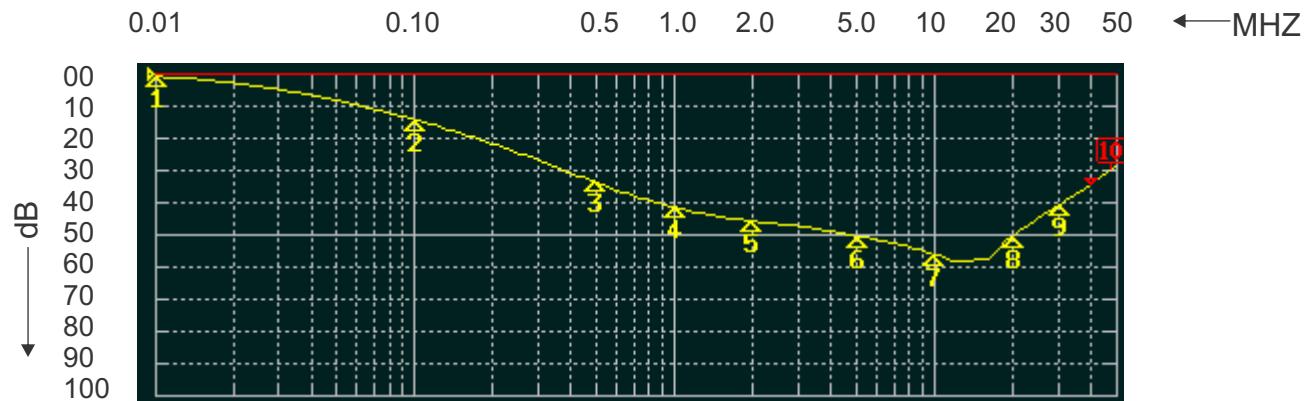
TOLERANCE: +/-1.0 mm



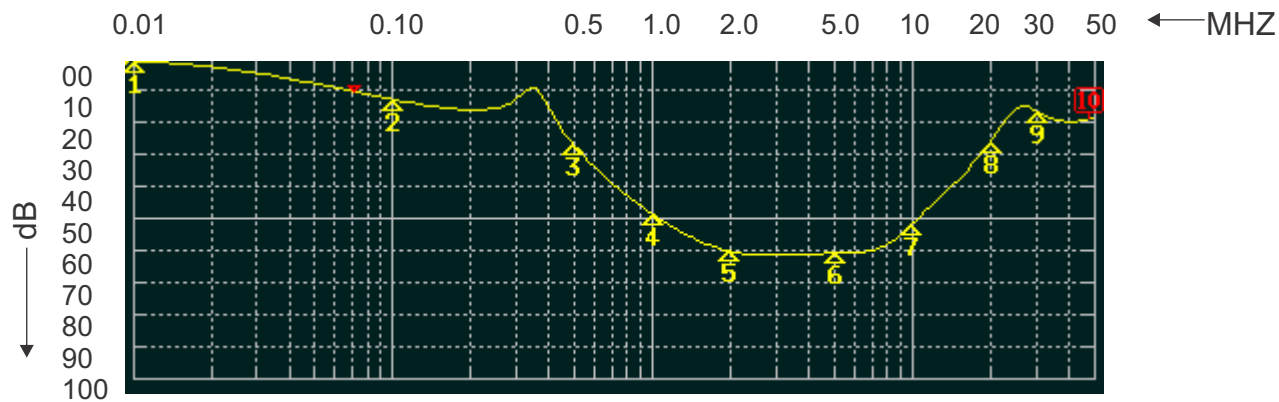
# ROXBURGH EMC

## FILTER INSERTION LOSS CHARACTERISTICS CISPR 17 - 50 OHM METHOD

### RES20F10



### COMMON MODE



### DIFFERENTIAL MODE

